

Monitoring System

Bridge StrikeAlert



The World of Load Measurement and Stress Analysis

System Features

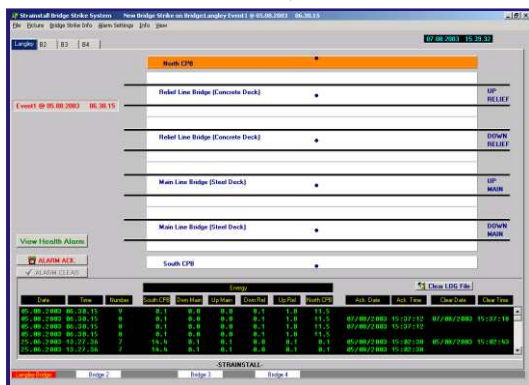
- No rail-mounted sensors required, so trackside access not needed
- Industrial PC Based
- Optional Camera system
- Modular system enables additional sensors and functions to be added when required
- Separate from signaling equipment (no complex safety case needs to be made)
- Unnecessary line closures reduced as severity of incident is immediately known



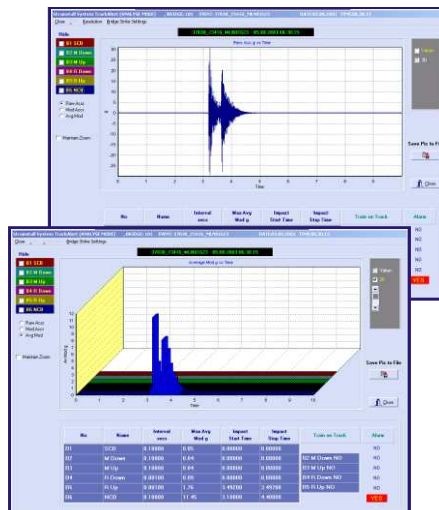
Bridge StrikeAlert is part of Strainstall's patented TrackAlert system, and is available as a stand alone package or an integrated option to a larger installation. The system incorporates a number of sensors attached to the underside of the bridge to identify the forces and sequence of impact when a road vehicle strikes the structure. Rapid communication of this information to signalling and operations personnel has both safety and performance benefits.

Signals from the installed sensors are constantly monitored by the StrikeAlert system. As soon as the impact trigger threshold is exceeded, data from all the sensors is stored, including a pre-trigger period. Simultaneously a sequence of images from digital cameras, where installed, are captured and stored to provide vehicle identification and road position after the impact.

The data is then processed to identify both the severity of the impact and its distribution across the bridge. In most cases it will be the collision protection beams (if fitted) which have withstood the greatest impact, but in some cases the main deck(s) of the bridge may be affected. An audible alarm signal is sounded in the signal box or control center to alert the operations staff, and a simple mimic display gives immediate detail of the severity of the strike. Structures staff can remotely review diagnostic displays showing more detailed information, and instantly access camera images to check the scene under the bridge, and determine the type of vehicle involved and its identity.



Simple Operations Screens



Structures Diagnostic Displays

Strainstall's team of experienced engineers operate from offices in Cowes, Bath and Aberdeen (UK), Norway, Belgium, USA and Dubai.

Strainstall UK Ltd
Charlton Lane
Midsomer Norton
Bath
BA3 4BE

Tel: +44 (0)1761 414939
Fax: +44 (0)1761 416655
Email: info@strainstallbath.co.uk
Website: www.strainstall.com