



The Strainstall range of telemetry load shackles complements our standard cabled version, and are ideal for situations where the use of traditional cable shackles would limit distance or movement, or where for safety reasons, a greater distance is needed between the load and the operator.

In addition to the benefits of increased safety and manoeuvrability, the telemetry shackle is far more convenient to use, and eliminates the problems associated with long lengths of trailing cable which become easily snagged and are prone to damage.

- **3 - 1000 tonne capacity**
- **Robust Construction**
- **200+ metre range**
- **Licence exempt**

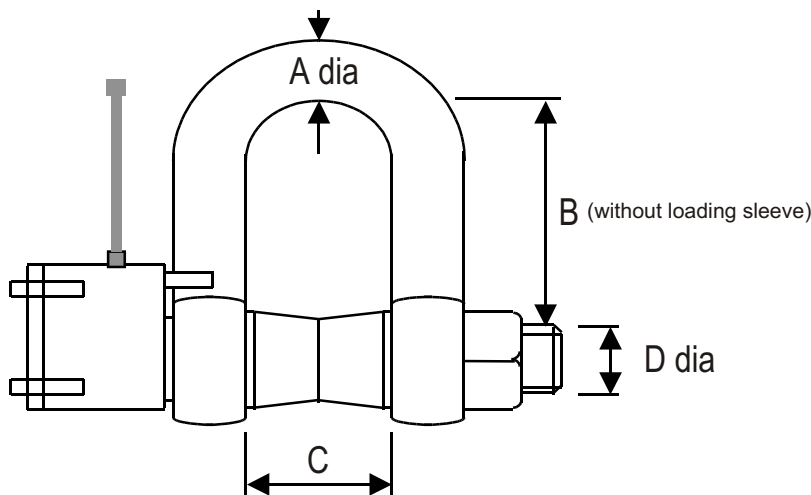
The hand-held display can store up to 20 different transducer parameters which enables one display to accommodate several load shackle signals, and by using a receiver/data converter that gives RS485 output, the number of monitored transducers can be increased to as many as 32. Battery check, data protection and error detection are also standard features. The shackle load range starts at 3 tonnes, with the top load only limited by the availability of shackle forgings, currently around 1000 tonnes. Normal operating distance is around 300 metres subject to operating conditions.

All shackles come with a calibration certificate. Optional carrying cases are available for sizes up to a 35 tonne rating.

Typical Specification

Rated Load	3, 6, 10, 17, 25, 35, 50, 75, 100 tonnes 150 - 1000 te on request	
Proof Load	133% of rated load	
Bridge Resistance	700 ohm	
Operating Temperature	-20 to +65 C	
Environmental Sealing	Load shackle IP67 equivalent Display IP65 equivalent	
Accuracy	Typically better than 0.75% of rated load	
Repeatability	+/- 0.1% of rated load	
Europe	Frequency Range Channels	868 Mhz 350 metres 20
North America	Frequency Range Channels	915 Mhz 200 metres 170
Power Supply - Transmitter Receiver	12 hours between charges 2 x AA Alkaline batteries - approx 24 hours use	
Display Features	7 ½ Digit Dual Range selector Peak/Trough capture	
Enclosure Details	ABS 90 x 152 x 34 deep	

Full Load Tonnes	Max. Proof Load Tonnes	Nom. Size "A"	Inside Length "B"	Inside Width "C"	Bolt Diam. "D"	Unit Weight Kg
3	4.2	25	85	43	28	3
6	8	25	85	43	28	3
10	14	32	95	51	35	6
17	23	38	125	60	41	10
25	34	45	150	74	51	15
35	47	50	170	83	57	22
50	67	65	200	105	70	42
75	100	75	230	127	83	69
100	134	89	270	146	95	120
200	270	120	500	175	130	235



**Note:**  
Where particular requirements are critical or load cells of a higher specification are required, we would be delighted to assist.

Strainstall UK Ltd  
9-10 Mariners Way  
Cowes  
Isle of Wight  
PO31 8PD

Tel: +44 (0)1983 203600  
Fax: +44 (0)1983 291335  
Email: sales@strainstall.co.uk  
Website: www.strainstall.com