

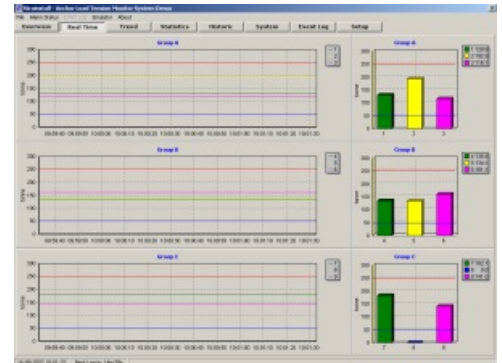


Turret and Spread Mooring Designs

Straininstall ALLM-Anchor Leg Load Monitoring systems provide real time data on mooring tensions for all types of ship shape production vessels. Designs can be provided for turret and conventional spread mooring installations. These PC based systems are capable of monitoring multiple channels simultaneously and provide a broad selection of archiving and analytical capabilities. Load measurement is accomplished using custom designed Straininstall instrumented load pins. These load pins are installed in the anchor legs using custom connection hardware. Straininstall application software may be tailored to meet the Customer's requirements. Systems can be configured to interface directly with other onboard monitoring and control systems.



Main System Display Screen



Historical Trend Display Screen

SPECIFICATIONS/FEATURES

- Tension measurement capacities exceeding 1,000 kips
- Stainless steel, dual channel, load pins for splash zone and subsea installations, manufactured by Straininstall
- Subsea rated signal cables with underwater mateable connectors
- Complete anchor leg connecting hardware including shackles, link plates and custom fittings
- Redundancy built in throughout the system
- Application software developed and maintained by Straininstall
- Zone 1 and Zone 2 certifications
- Certified by ABS and DNV
- 25 year design life
- Straininstall Field Service personnel available worldwide