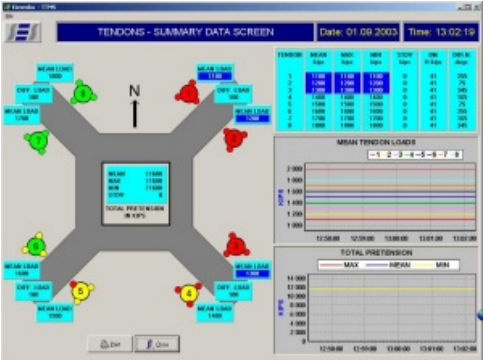


Monitoring System

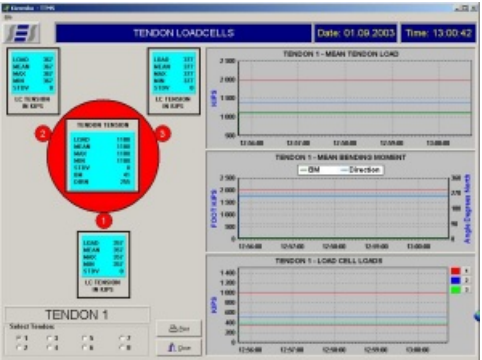
TLP - Tendon Tension Monitoring Systems



The Straininstall TTMS-Tendon Tension Monitoring System provides real time data on mooring tensions. Straininstall PLC or PC based system utilizing strain gauge load cells installed on the tendon porches in the tendon top connector assembly to measure tendon loads. The system is capable of monitoring over 48 measurement channels simultaneously, providing a broad selection of archiving and analytical capabilities. Straininstall application software is menu driven and Operator friendly. The system is designed to interface directly with other onboard monitoring and control systems. Application software may be tailored to meet the Customers requirements and is designed for long term upgrades.



Main System Display Screen



Individual Tendon Screen

SPECIFICATIONS/FEATURES

- Tension measurement capacity to 8,000 kips (4,000 tons)
- Stainless steel, dual channel, subsea load cells designed and manufactured by Straininstall
- Subsea rated signal cables with underwater mateable connectors
- Application software developed and maintained by Straininstall
- Redundancy built in throughout the system
- Zone 1 and Zone 2 certifications
- Certified by ABS and DNV
- 25 year design life
- Straininstall Field Service personnel available worldwide