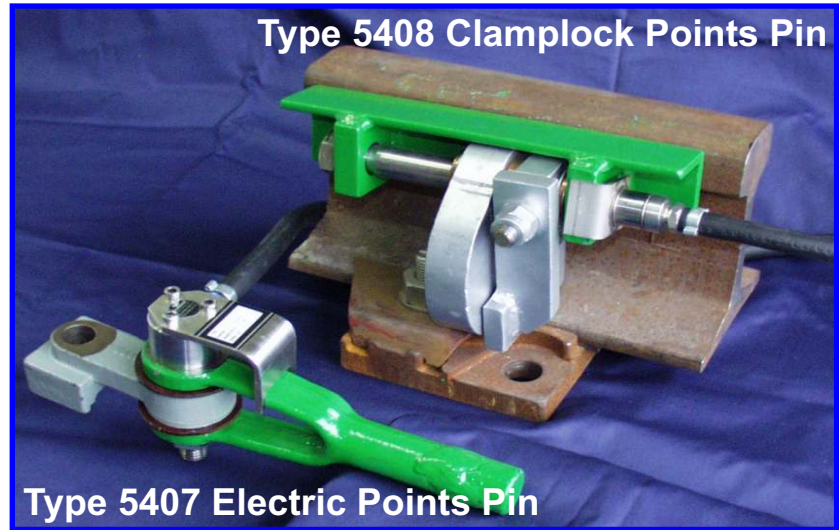


Type 5408 Clamplock Points Pin

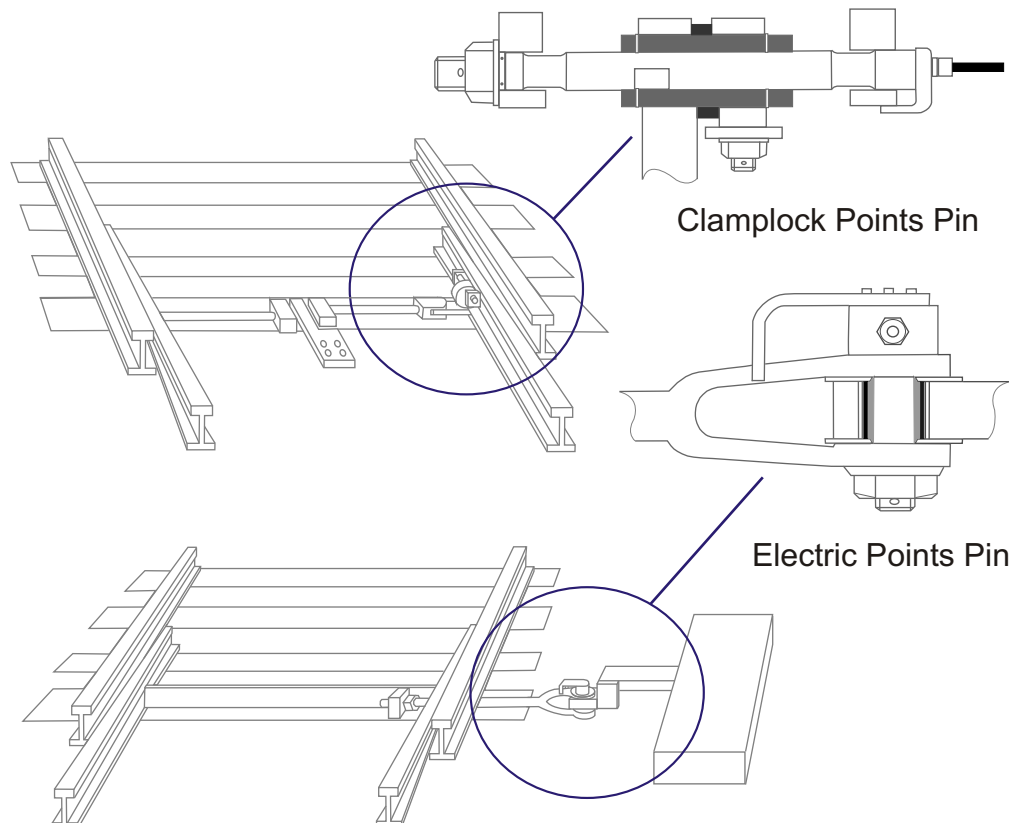


Type 5407 Electric Points Pin

The Strainstall Rail Points Load Pin has been specially designed and developed using our unique experience in producing high quality load pins to measure operating forces of mechanical systems.

The points pin is used in systems for advance warning of points failure, allowing maintenance teams to take preventative action. They also measure clamping forces enabling correct setting of the lock mechanism, and are supplied with build-in amplifiers to give a 4-10mA output. An optional external Isolator Amplifier is also available.

As with all load cells, the rail points pins can be used with Strainstall's range of standard and special instrumentation packages. Load cells and systems are supplied with full calibration certification.

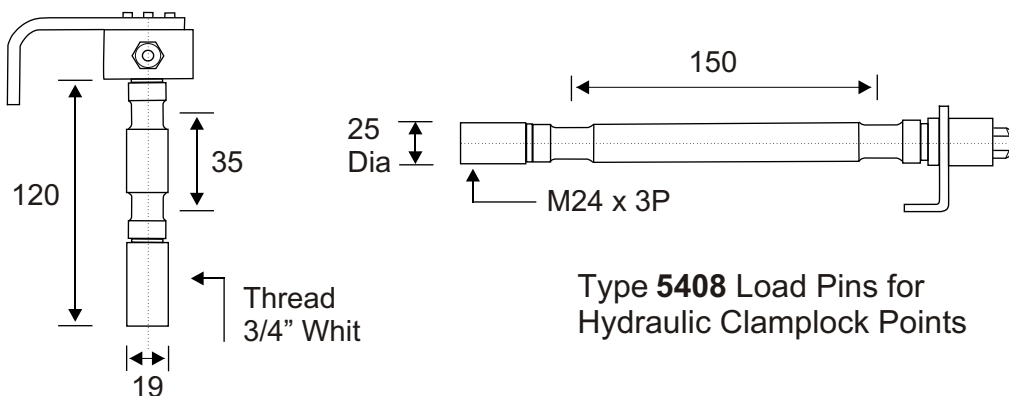


Typical Specification

Type Numbers	5407 - Electric 5408 - Clamplock
Related Load	2 tonne - Electric 1 tonne - Clamplock
Proof Load	150% of rated load
Nominal Output	4-20mA
Recommended Supply Voltage	24V
Maximum/Minimum Supply Voltage	30V / 18V
Bridge Resistance	700 ohm nominal
Operating Temperature	-10 to +60 C.
Accuracy	Better than 1% of rated load
Repeatability	Better than 0.5% of rated load
Pin Material	High tensile stainless steel
Environmental Protection	IP68

System Features

- Designed for Electric and Clamp Lock points
- Fits into the same physical space as the pivot pin on the switch rail bracket assembly
- Can be fitted in Plain Lead, Switch Diamond or Slip Points
- Easy to install. Replaces existing pin with no modifications to the system
- Stainless Steel Construction
- Optional external Isolation Amplifier



Type **5407** Load Pins
for Electric Points

Type **5408** Load Pins for
Hydraulic Clamplock Points

Patented

Strainstall UK Ltd
9-10 Mariners Way
Cowes
Isle of Wight
PO31 8PD

Tel: +44 (0)1983 203600
Fax: +44 (0)1983 291335
Email: sales@strainstall.co.uk
Website: www.strainstall.com